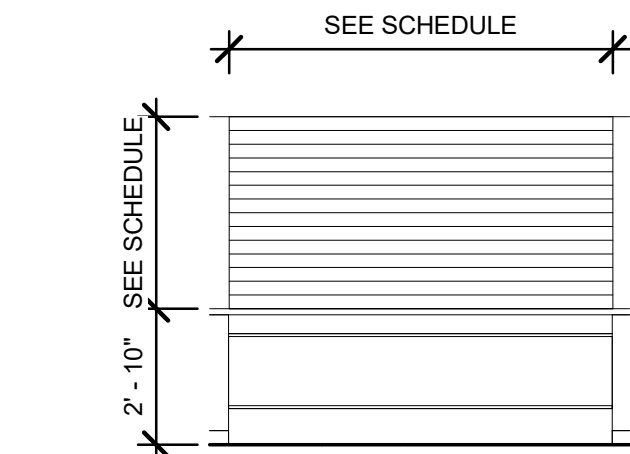


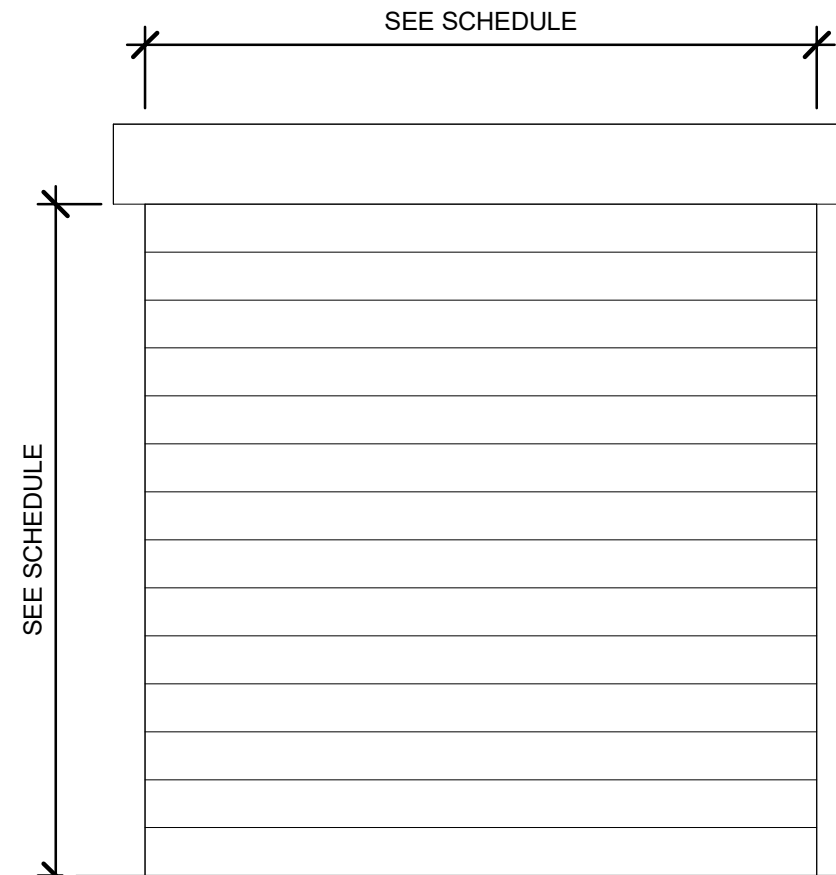
ROOM FINISH SCHEDULE										
ROOM NUMBER	ROOM NAME	FLOOR	BASE	WALLS				CEILING FINISH	NOTES	
				N	S	E	W			
101	SERVICE BAYS	F-3	-	PT-3 / PT-2	PT-3 / PT-2	PT-3 / PT-2	PT-3 / PT-2	-	1,3	
102	M. R.R.	F-3	-	WC-1	WC-1	WC-1	WC-1	C-1	2	
103	W. R.R.	F-3	-	WC-1	WC-1	WC-1	WC-1	C-1	2	
104	BARREL STORAGE	F-3	-	PT-3 / PT-2	PT-3 / PT-2	PT-3 / PT-2	PT-3 / PT-2	-	1	
105	OIL/COMPRESSOR	F-3	-	PT-3 / PT-2	PT-3 / PT-2	PT-3 / PT-2	PT-3 / PT-2	-	1	
106	PARTS RECEIVING	F-3	-	PT-3 / PT-2	PT-3 / PT-2	PT-3 / PT-2	PT-3 / PT-2	-	1	
107	PARTS	F-3	-	PT-3 / PT-2	PT-3 / PT-2	PT-3 / PT-2	PT-3 / PT-2	-	1	
108	TECH PARTS CTR	F-3	-	PT-3 / PT-2	PT-3 / PT-2	PT-3 / PT-2	PT-3 / PT-2	C-1	1	
109	OFFICE	F-3	B-1	PT-2	PT-2	PT-2	PT-2	C-1		
110	OFFICE	F-3	B-1	PT-2	PT-2	PT-2	PT-2	C-1		
111	SPECIAL TOOLS	F-3	-	PT-3 / PT-2	PT-3 / PT-2	PT-3 / PT-2	PT-3 / PT-2	-	1	
112	SERVICES MANAGER	F-3	B-1	PT-2	PT-2	PT-2	PT-2	C-1		
113	W. R.R.	F-4	-	WC-2 / PT-2	WC-2 / PT-2	WC-2 / PT-2	WC-2 / PT-2	C-1	2	
114	M. R.R.	F-4	-	WC-2 / PT-2	WC-2 / PT-2	WC-2 / PT-2	WC-2 / PT-2	C-1	2	
115	SERVICE WRITERS	F-1 / F-3	B-1	PT-2	PT-2	PT-2	PT-2	C-2	4	
116	CORRIDOR	F-3	B-1	PT-2	PT-2	PT-2	PT-2	C-1		
117	BREAKROOM	F-3	B-1	PT-2	PT-2	PT-2	PT-2	C-2, C-4		
118	M. R.R.	F-4	-	WC-2 / PT-2	WC-2 / PT-2	WC-2 / PT-2	WC-2 / PT-2	C-1	2	
119	WAITING	F-3	B-1	PT-2	PT-2	PT-1	PT-2	C-2		
120	JAN.	F-3	-	WC-1	WC-1	WC-1	WC-1	-		
121	W. R.R.	F-4	-	WC-2 / PT-2	WC-2 / PT-2	WC-2 / PT-2	WC-2 / PT-2	C-1	2	
122	STAIRS	F-3	B-1	PT-2	PT-2	PT-2	PT-2	C-1		
123	SPRINKLER RISER	F-3	-	PT-2	PT-2	PT-2	PT-2	-		
201	DATA	F-3	B-1	PT-2	PT-2	PT-2	PT-2	-		
202	PARTS STORAGE	F-3	-	PT-3 / PT-2	PT-3 / PT-2	PT-3 / PT-2	PT-3 / PT-2	-	1	
203	PARTS	F-3	B-1	PT-2	PT-2	PT-2	PT-2	C-1		
204	HVAC	-	-	PT-2	PT-2	PT-2	PT-2	-		
205	CONFERENCE	F-3	B-1	PT-1	PT-2	PT-2	PT-2	C-1		
206	JAN.	F-3	-	WC-1	WC-1	WC-1	WC-1	-		
207	W. R.R.	F-4	-	WC-2 / PT-2	WC-2 / PT-2	WC-2 / PT-2	WC-2 / PT-2	C-1	2	
208	CL	F-3	-	PT-2	PT-2	PT-2	PT-2	C-1		
209	M. R.R.	F-4	-	WC-2 / PT-2	WC-2 / PT-2	WC-2 / PT-2	WC-2 / PT-2	C-1	2	
210	COFFEE	F-4	B-1	PT-2	PT-2	PT-2	PT-2	C-1		
211	EQUIPMENT CL.	F-3	B-1	PT-2	PT-2	PT-2	PT-1	C-1		

ROOM FINISH SCHEDULE NOTES:  
1. PT-3 PAINT TO 6'-0" ABOVE FINISHED FLOOR REMAINING WALL TO BE PAINTED IN PT-2.  
2. WC-2 TO BE APPLIED TO 4'-0" ABOVE FINISHED FLOOR REMAINING WALL TO BE PAINTED IN PT-2.  
3. EXTERIOR OF ROOM 201 TO BE OF GYPBOARD CONSTRUCTION PAINTED IN PT-2.  
4. F-1 TO BE APPLIED BETWEEN GLASS PARTITIONS REMAINING FLOOR TO BE F-3.

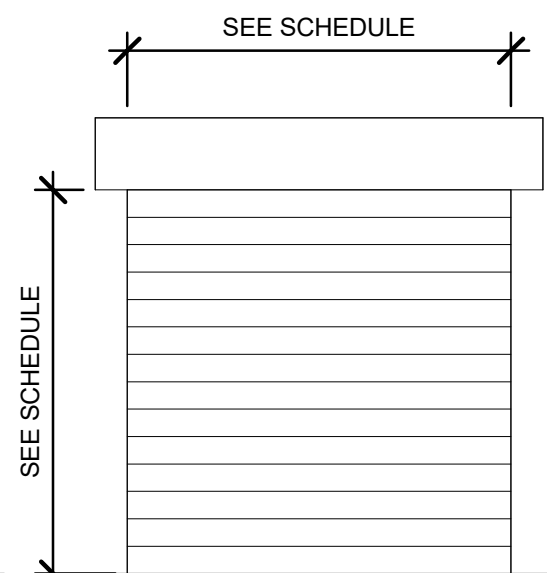
ROOM FINISH LEGEND	
FLOORING	
MARK	DESCRIPTION
F-1	CARPET MFG: SHAW CONTRACT STYLE: COLOR FRAME TILE 5T081 SIZE: 24" X 24" TILE INSTALL: 1/4 TURN COLOR: MYSTIC GREY 81515
F-2	CARPET MFG: INTERFACE STYLE: HARMONIZE SIZE: 9.845" X 39.38" (25CM X 1M) TILE COLOR: 104044 PEWTER
F-3	CONCRETE FLOOR STYLE: POURED IN PLACE STEEL TROWEL FINISH SEALER TO PROTECT FROM GREASE COLOR: SHERWIN WILLIAMS ARMORSEAL REXTHANE I CLEAR, GLOSS NOTE: CONTROL JOINTS 20'-0" O.C. AS REQUIRED
F-4	TILE MFG: VIRGINIA TILE SPEC: VTIL COLLECTION COLOR: WATSON SILVER VTIL WT SI GROUT: TEC DOVE GRAY 908
F-5	TILE MFG: VIRGINIA TILE SPEC: CERAMIC/ MATTE FINISH/ RECTIFIED SIZE: 12"-24" CUSTOM BUILDING PRODUCTS # COLOR: CAESAR TILES/ CLASH SPIRIT CAEESP1224R MATT
BASE	
MARK	DESCRIPTION
B-1	MFG: JOHNSONITE SPEC: RUBBER WALL BASE COLOR: 6" TRADITIONAL DURACOVE 50 WHITE W
CEILING	
MARK	DESCRIPTION
C-1	1 HOUR FIRE RATED ASSEMBLY - 3 LAYERS OF 5/8" GYPSUM BOARD CEILING; TAPE, FLOAT, FIRE CAULKING, PRIME & PAINT AS SPECIFIED IN COLOR AS SELECTED.
C-2	2'X2' SUSPENDED ACOUSTICAL CEILING SYSTEM, AS SPECIFIED
C-3	SOUND BAFFLES AS SPECIFIED IN COLOR AS SELECTED BY OWNER
C-4	5/8" GYPSUM BOARD CEILING; TAPE, FLOAT, PRIME & PAINT AS SPECIFIED IN COLOR AS SELECTED.
WALL	
WC-1	FRP
WC-2	TILE MFG: VIRGINIA TILE SPEC: VTIL COLLECTION COLOR: WATSON SILVER VTIL WT SI GROUT: TEC DOVE GRAY 908
PAINT	
MARK	DESCRIPTION
PT-1	MFG: SHERWIN WILLIAMS PRODUCT: SW PROMAR 200 ZERO V.O.C. INTERIOR LATEX EGSHEL, B20 SERIES COLOR: CUSTOM SW COLOR FMC001 FORD BLUE 2022
PT-2	MFG: SHERWIN WILLIAMS PRODUCT: SW PROMAR 200 ZERO V.O.C. INTERIOR LATEX EGSHEL, B20 SERIES COLOR: MINDFUL GREY SW 7016
PT-3	MFG: SHERWIN WILLIAMS PRODUCT: SW PROMAR 200 ZERO V.O.C. INTERIOR LATEX EGSHEL, B20 SERIES COLOR: GAUNTLET GREY SW 7019
MILLWORK	
LAM-1	MFG: WILSONART SPEC: WOOD LAMINATE FINISH: SOFTGRAIN COLOR: LANDMARK WOOD 7981K-12
LAM-2	MFG: FORMICA SPEC: WOOD LAMINATE FINISH: NATURAL GRAIN COLOR: CASCARA TEAKWOOD 8909-NG
COUNTERTOP	
MARK	DESCRIPTION
SS-1	MFG: CORIAN STYLE: QUARTZ COLOR: CONCRETE CARRARA
SS-2	MFG: CORIAN STYLE: SOLID SURFACE COLOR: CARBON AGGREGATE



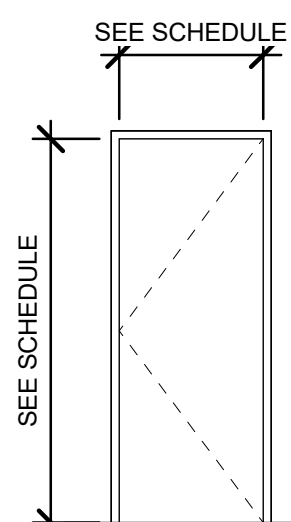
TYPE H



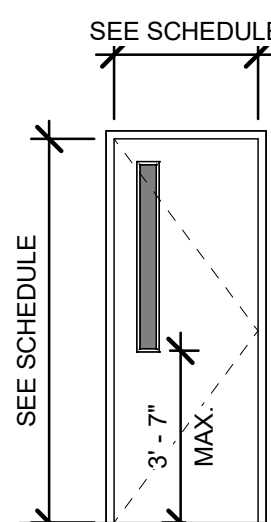
TYPE A



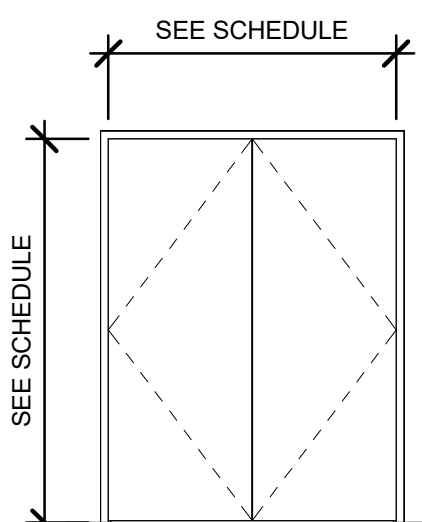
TYPE B



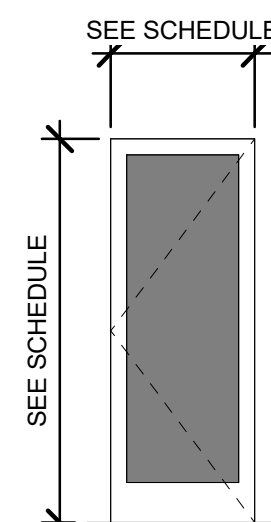
TYPE C



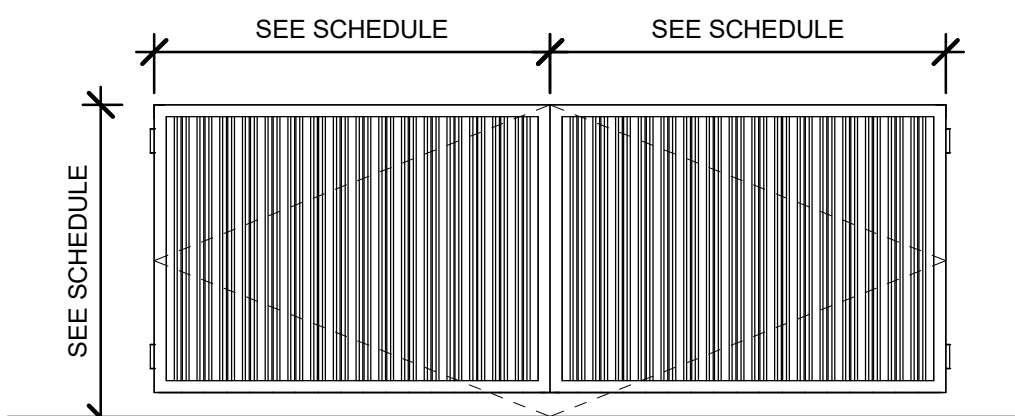
TYPE D



TYPE E



TYPE F



TYPE G

DOOR SCHEDULE (COMMERCIAL)												
MARK	OPENING SIZE		FUNCTION	DOOR TYPES	DOOR		FRAME		GLASS TYPE	FIRE RATING	COMMENTS	
	WIDTH	HEIGHT			MATERIAL	FINISH	MATERIAL	FINISH				
101A	3'-0"	8'-0"	EXTERIOR	C	H.M.	PAINTED	H.M.	PAINTED	-	-	PANIC HARDWARE	
101AA	14'-0"	14'-0"	EXTERIOR	A	AS SPECIFIED	AS SPECIFIED	AS SPECIFIED	AS SPECIFIED	-	-	-	
101AB	14'-0"	14'-0"	EXTERIOR	A	AS SPECIFIED	AS SPECIFIED	AS SPECIFIED	AS SPECIFIED	-	-	-	
101AC	14'-0"	14'-0"	EXTERIOR	A	AS SPECIFIED	AS SPECIFIED	AS SPECIFIED	AS SPECIFIED	-	-	-	
101AD	14'-0"	14'-0"	EXTERIOR	A	AS SPECIFIED	AS SPECIFIED	AS SPECIFIED	AS SPECIFIED	-	-	-	
101AE	14'-0"	14'-0"	EXTERIOR	A	AS SPECIFIED	AS SPECIFIED	AS SPECIFIED	AS SPECIFIED	-	-	-	
101AF	14'-0"	14'-0"	EXTERIOR	A	AS SPECIFIED	AS SPECIFIED	AS SPECIFIED	AS SPECIFIED	-	-	-	
101AG	3'-0"	8'-0"	EXTERIOR	C	H.M.	PAINTED	H.M.	PAINTED	-	-	PANIC HARDWARE	
101B	14'-0"	14'-0"	EXTERIOR	A	AS SPECIFIED	AS SPECIFIED	AS SPECIFIED	AS SPECIFIED	-	-	-	
101C	14'-0"	14'-0"	EXTERIOR	A	AS SPECIFIED	AS SPECIFIED	AS SPECIFIED	AS SPECIFIED	-	-	-	
101D	11'-0"	14'-0 1/2"	EXTERIOR	A	AS SPECIFIED	AS SPECIFIED	AS SPECIFIED	AS SPECIFIED	-	-	-	
101E	14'-0"	14'-0"	EXTERIOR	A	AS SPECIFIED	AS SPECIFIED	AS SPECIFIED	AS SPECIFIED	-	-	-	
101G	14'-0"	14'-0"	EXTERIOR	A	AS SPECIFIED	AS SPECIFIED	AS SPECIFIED	AS SPECIFIED	-	-	-	
101H	3'-0"	8'-0"	EXTERIOR	C	H.M.	PAINTED	H.M.	PAINTED	-	-	PANIC HARDWARE	
101J	14'-0"	14'-0"	EXTERIOR	A	AS SPECIFIED	AS SPECIFIED	AS SPECIFIED	AS SPECIFIED	-	-	-	
101K	14'-0"	14'-0"	EXTERIOR	A	AS SPECIFIED	AS SPECIFIED	AS SPECIFIED	AS SPECIFIED	-	-	-	
101L	14'-0"	14'-0"	EXTERIOR	A	AS SPECIFIED	AS SPECIFIED	AS SPECIFIED	AS SPECIFIED	-	-	-	
101M	14'-0"	14'-0"	EXTERIOR	A	AS SPECIFIED	AS SPECIFIED	AS SPECIFIED	AS SPECIFIED	-	-	-	
101N	14'-0"	14'-0"	EXTERIOR	A	AS SPECIFIED	AS SPECIFIED	AS SPECIFIED	AS SPECIFIED	-	-	-	
101O	14'-0"	14'-0"	EXTERIOR	A	AS SPECIFIED	AS SPECIFIED	AS SPECIFIED	AS SPECIFIED	-	-	-	
101P	14'-0"	14'-0"	EXTERIOR	A	AS SPECIFIED	AS SPECIFIED	AS SPECIFIED	AS SPECIFIED	-	-	-	
101Q	14'-0"	14'-0"	EXTERIOR	A	AS SPECIFIED	AS SPECIFIED	AS SPECIFIED	AS SPECIFIED	-	-	-	
101R	14'-0"	14'-0"	EXTERIOR	A	AS SPECIFIED	AS SPECIFIED	AS SPECIFIED	AS SPECIFIED	-	-	-	
101S	14'-0"	14'-0"	EXTERIOR	A	AS SPECIFIED	AS SPECIFIED	AS SPECIFIED	AS SPECIFIED	-	-	-	
101T	14'-0"	14'-0"	EXTERIOR	A	AS SPECIFIED	AS SPECIFIED	AS SPECIFIED	AS SPECIFIED	-	-	-	
101U	3'-0"	8'-0"	EXTERIOR	C	H.M.	PAINTED	H.M.	PAINTED	-	-	PANIC HARDWARE	
101W	14'-0"	14'-0"	EXTERIOR	A	AS SPECIFIED	AS SPECIFIED	AS SPECIFIED	AS SPECIFIED	-	-	-	
101X	14'-0"	14'-0"	EXTERIOR	A	AS SPECIFIED	AS SPECIFIED	AS SPECIFIED	AS SPECIFIED	-	-	-	
101Y	14'-0"	14'-0"	EXTERIOR	A	AS SPECIFIED	AS SPECIFIED	AS SPECIFIED	AS SPECIFIED	-	-	-	
101Z	14'-0"	14'-0"	EXTERIOR	A	AS SPECIFIED	AS SPECIFIED	AS SPECIFIED	AS SPECIFIED	-	-	-	
102A	3'-0"	8'-0"	EXTERIOR	C	H.M.	PAINTED	H.M.	PAINTED	-	-	-	
102B	3'-0"	8'-0"	INTERIOR	C	H.M.	PAINTED	H.M.	PAINTED	-	-	-	
103A	3'-0"	8'-0"	EXTERIOR	C	H.M.	PAINTED	H.M.	PAINTED	-	-	-	
104A	8'-0"	8'-0"	INTERIOR	A	STEEL COIL DOOR	FACTORY	STEEL	PAINTED	-	-	-	
105A	6'-0"	8'-0"	EXTERIOR	E	H.M.	PAINTED	H.M.	PAINTED	-	-	-	
106A	3'-0"	8'-0"	EXTERIOR	D	H.M.	PAINTED	H.M.	PAINTED	AS SPECIFIED	-	-	
106B	10'-0"	9'-0"	EXTERIOR	B	STEEL COIL DOOR	FACTORY	STEEL	PAINTED	-	-	INSULATED	
106C	10'-0"	9'-0"	EXTERIOR	B	STEEL COIL DOOR	FACTORY	STEEL	PAINTED	-	-	INSULATED	
107A	10'-0"	9'-0"	INTERIOR	B	H.M.	PAINTED	H.M.	PAINTED	-	-	-	
107B	6'-0"	8'-0"	EXTERIOR	E	H.M.	PAINTED	H.M.	PAINTED	-	-	PANIC HARDWARE	
108A	6'-0"	8'-0"	EXTERIOR	E	H.M.	PAINTED	H.M.	PAINTED	-	-	PANIC HARDWARE	
108B	8'-0"	4'-0"	EXTERIOR	H	STEEL COIL DOOR	AS SPECIFIED	STEEL	PAINTED	-	-	COUNTER COIL DOOR	
109A	3'-0"	8'-0"	INTERIOR	F	ALUM.	CLEAR ANODIZED	ALUM.	CLEAR ANODIZED	AS SPECIFIED	-	-	
110A	3'-0"	8'-0"	INTERIOR	F	ALUM.	CLEAR ANODIZED	ALUM.	CLEAR ANODIZED	AS SPECIFIED	-	-	
111A	3'-0"	7'-0"	INTERIOR	C	H.M.	PAINTED	H.M.	PAINTED	-	-	-	
112A	3'-0"	8'-0"	EXTERIOR	F	ALUM.	CLEAR ANODIZED	ALUM.	CLEAR ANODIZED	AS SPECIFIED	-	-	
112B	3'-0"	8'-0"	INTERIOR	C	H.M.	PAINTED	H.M.	PAINTED	-	-	-	
113A	3'-0"	8'-0"	INTERIOR	C	H.M.	PAINTED	H.M.	PAINTED	-	-	-	
114A	3'-0"	8'-0"	INTERIOR	C	H.M.	PAINTED	H.M.	PAINTED	-	-	-	
115A	3'-0"	8'-0"	EXTERIOR	F	ALUM.	CLEAR ANODIZED	ALUM.	CLEAR ANODIZED	AS SPECIFIED	-	-	
116A	3'-0"	8'-0"	EXTERIOR	C	H.M.	PAINTED	H.M.	PAINTED	AS SPECIFIED	-	PANIC HARDWARE	
117A	3'-0"	8'-0"	INTERIOR	F	ALUM.	CLEAR ANODIZED	ALUM.	CLEAR ANODIZED	AS SPECIFIED	-	PANIC HARDWARE	
118A	3'-0"	8'-0"	INTERIOR	C	H.M.	PAINTED	H.M.	PAINTED	-	-	-	
119A	3'-0"	8'-0"	EXTERIOR	F	ALUM.	CLEAR ANODIZED	ALUM.	CLEAR ANODIZED	AS SPECIFIED	-	PANIC HARDWARE	
120A	3'-0"	8'-0"	INTERIOR	C	H.M.	PAINTED	H.M.	PAINTED	-	-	-	
121A	3'-0"	8'-0"	INTERIOR	C	H.M.	PAINTED	H.M.	PAINTED	-	-	-	
122A	3'-0"	8'-0"	INTERIOR	C	H.M.	PAINTED	H.M.	PAINTED	-	1HR	PANIC HARDWARE	
122B	3'-0"	8'-0"	EXTERIOR	C	H.M.	PAINTED	H.M.	PAINTED	-	-	PANIC HARDWARE	
122C	3'-0"	8'-0"	INTERIOR	C	H.M.	PAINTED	H.M.	PAINTED	-	1HR	-	
123A	3'-0"	8'-0"	EXTERIOR	C	H.M.	PAINTED	H.M.	PAINTED	-	-	-	
201A	3'-0"	7'-0"	EXTERIOR	C	H.M.	PAINTED	H.M.	PAINTED	-	-	-	
203A	3'-0"	8'-0"	INTERIOR	C	H.M.	PAINTED	H.M.	PAINTED	-	-	-	
203B	6'-0"	7'-0"	EXTERIOR	D	H.M.	PAINTED	H.M.	PAINTED	-	-	-	
204A	3'-0"	8'-0"	INTERIOR	C	H.M.	PAINTED	H.M.	PAINTED	-	-	-	
205A	3'-0"	8'-0"	INTERIOR	C	H.M.	PAINTED	H.M.	PAINTED	-	-	PANIC HARDWARE	
208A	3'-0"	8'-0"	INTERIOR	C	H.M.	PAINTED	H.M.	PAINTED	-	-	-	
209A	3'-0"	8'-0"	INTERIOR	C	H.M.	PAINTED	H.M.	PAINTED	-	-	-	
211A	3'-0"	8'-0"	INTERIOR	C	H.M.	PAINTED	H.M.	PAINTED	-	-	-	
G-1	8'-3"	6'-6"	-	G	STEEL	PAINTED	GALV. STEEL	PAINTED	-	-	DUMPSTER ENCLOSURE GATE	
G-2	8'-3"	6'-6"	-	G	STEEL	PAINTED	GALV. STEEL	PAINTED	-	-	DUMPSTER ENCLOSURE GATE	